



**SIRONA's** SIDEXIS TWAIN drivers allow the acquisition of digital X-ray images with TWAIN compatible applications. These applications are using **SIRONA's** Intraoral or Orthophos X-ray devices like scanners and are responsible for the data management of acquired images.

When acquiring x-ray images by using this TWAIN driver, it can not be guaranteed that the resulting image quality compares to the SIRONA quality that used to. Optimum image quality can be achieved by using SIDEXIS XG as image acquisition and processing software.

## REQUIREMENTS

A preinstalled SIDEXIS application (Version 5.5 or higher) is required for TWAIN operations. To use the drivers an already installed TWAIN compatible application is required, too.

Please note that, nevertheless, Sirona's TWAIN drivers cannot be accessed by SIDEXIS. This behaviour is not a bug, it's by design.

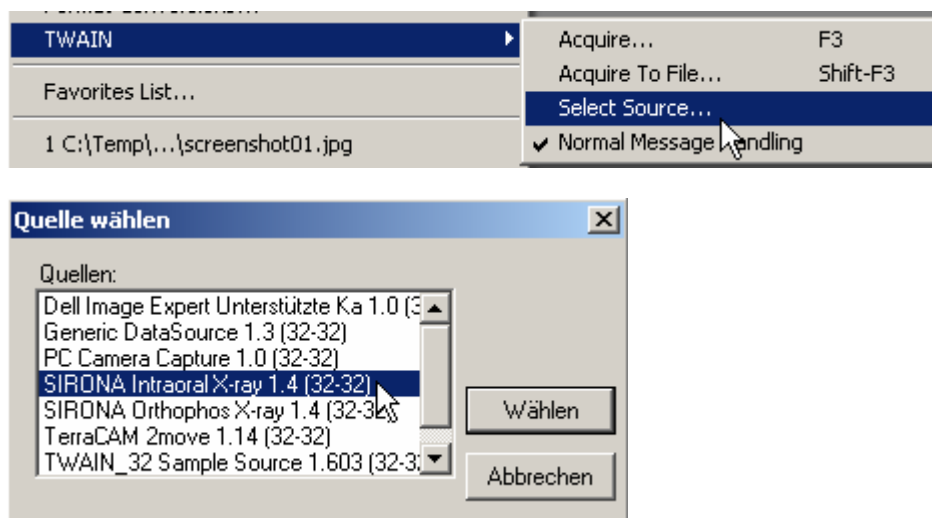
## INSTALLATION

Run the provided SETUP.EXE installation application to get the drivers installed. Depending on Your distribution a TWAIN Intraoral X-ray driver, a TWAIN Orthophos X-ray driver or both will be installed. The installation options are displayed during the setup process. After installation the TWAIN drivers are ready to run.

## USAGE

A typical TWAIN application scenario looks like following:

1. Select the desired imaging source. Having the SIDEXIS TWAIN drivers installed the SIRONA X-ray device options are listed inside the source list of available devices:



2. Initiate the image scan process. Right after starting the acquire process a SIDEXIS image capture dialog will be displayed. This dialog is identical to the well known SIDEXIS image acquisition dialogs:



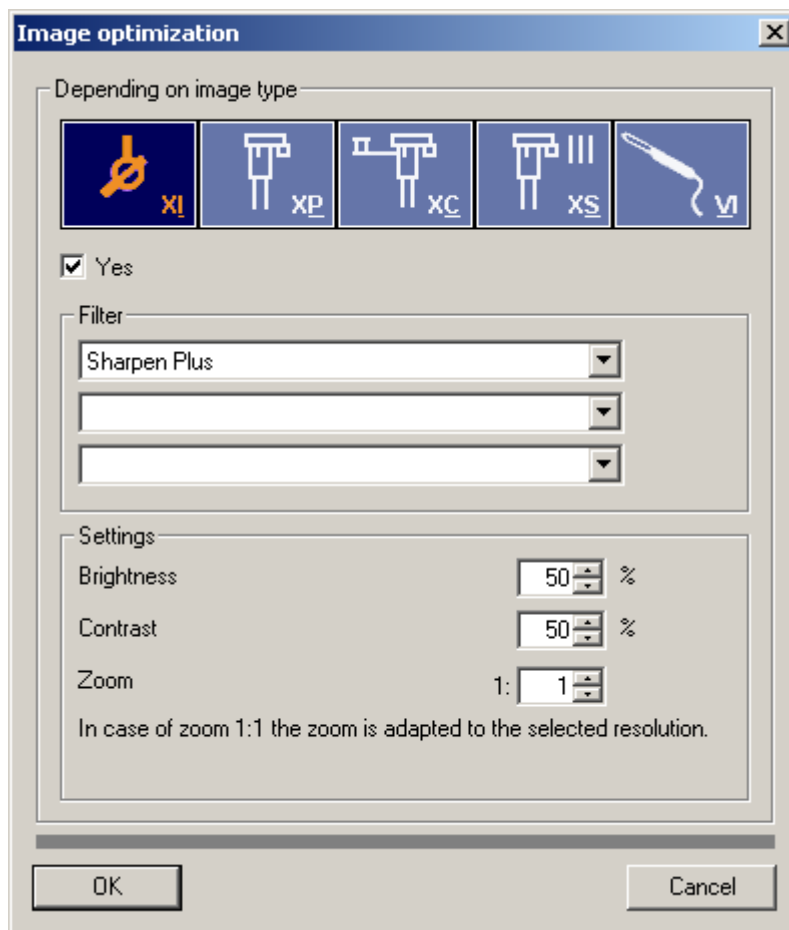
## CONFIGURATION

The configuration of the SIDEXIS TWAIN driver is optional and only required, if you want to use different settings.

- **Image optimization**

Use SIDEXIS to review / configure image optimization. These settings for image optimization will also be applied when using the SIDEXIS TWAIN drivers.

1. Start SIDEXIS
2. Choose in SIDEXIS: Utilities / Configure system / Exposure / Image optimization



3. The parameters for image optimization can be set for each image type (XI, XP, XC, XS), due to the activated button(s) at the top of the dialog.
4. Refer to the SIDEXIS manual for further details to these settings.
5. Acknowledge the settings with OK if desired.
6. IMPORTANT: Close SIDEXIS before working again with SIDEXIS TWAIN drivers.

- **Circular service image buffer**

For safety purposes the SIDEXIS TWAIN driver stores the last 5 images in the subfolder SiTwain in the SIDEXIS directory without image optimization.

To modify these default settings, the file named SiTwain.ini in the installation directory of the SIDEXIS TWAIN driver can be edited:

[CIRCULARBUFFER]	
BufferSize	Default=5; the maximum count of saved images; the oldest file will be deleted when exceeding the maximum count.

*Remark:* Regular defragmentation of the harddisk is recommended.